



**CENTRO DE CONGRESSOS  
DO ALGARVE**  
VILAMOURA • PORTUGAL



# CENTRO DE CONGRESSOS DO ALGARVE

ALGARVE CONGRESS CENTRE



# CENTRO DE CONGRESSOS DO ALGARVE

## WORLD-CLASS EVENTS IN PORTUGAL

Centro de Congressos do Algarve is the premier destination for conferences, meetings, exclusive car launches and functions in southern Portugal.

Modern facilities offer adaptable layouts, catering to groups of all sizes.

State-of-the-art technology brings visionary planning to life.

The Congress Centre is fully integrated into the contiguous Tivoli Marina Vilamoura Hotel, home to restaurants, swimming pools, Spa, concession at Vilamoura beach, Purobeach Vilamoura and more. The perfect location, in central Vilamoura, promises plentiful opportunities for adventure and relaxation in the Algarve.





## **FLEXIBLE AREAS**

Benefit from complete freedom in your planning with several large and adaptable rooms to choose from. A selection of wide foyer areas suitable for exhibitions, production area, and more.

Our main plenary room, Fénix, features an incredible ceiling height of 10 metres, maximum capacity for 3,000 people and can be adjusted to suit groups of varying sizes. This is Europe's only meeting venue with such highly functional dimensions, further emphasised by full access to hotel facilities.

## **INSPIRING SETTINGS**

Get down to business or celebrate in sophisticated spaces bursting with natural light. Indoor and alfresco areas showcase breathtaking marina and waterfront 180° panoramas.

Thanks to the mild Mediterranean climate, gather comfortably with exclusive scenery: gardens, rooftops, terraces, beaches and more.



## **PRIVILEGED ACCESS**

Keep the Algarve at your fingertips with a central position in Vilamoura. Enjoy close proximity to attractions, commercial and cultural spaces, casinos and entertainment. Set out for boating adventures from the marina. Centro de Congressos do Algarve is located just 25 minutes from Faro Airport.

## **STATE-OF-THE-ART SUPPORT**

Take advantage of the versatile modern facilities and high-speed WiFi usage allowances with 200MB, with ability to reach 2GB (subject to quote). Complimentary parking, loading and unloading zones, and capacity for heavy loads ensures that organisation and setup always run smoothly.

## **IMPECCABLE SERVICE**

Being connected to the hotel promises flexibility and space to meet diverse needs with impeccable 5-star service. Catering options include contemporary fusion cuisine (Purobeach Vilamoura), Pepper's Steakhouse and more.

Creating several privately-catered areas is also possible, such as the luxurious gardens of Lakeside, with capacity for up to 3000 guests or the exclusive Ocean Lounge, a private outdoor terrace with outstanding views. To complement your event with an unforgettable stay, benefit from a wide selection of accommodation options within Vilamoura area, with over 3000 rooms from 4 and 5-star properties.





## FLOOR 0 PÉGASO AND NEPTUNO

ROOM	L x W x H	AREA (sqm)	THEATRE	SCHOOL	CABARET	BANQUET	COCKTAIL COFFEE BREAK
PÉGASO	19.50 x 21.72 x 4	420	430	210	168	208	400
I	5.38 x 8.64 x 4	46	60	30	40	50	—
II	4.24 x 8.64 x 4	37	48	27	24	30	—
III	4.29 x 8.64 x 4	37	48	27	24	30	—
IV	6.31 x 10.81 x 4	55	60	27	32	50	—
V	6.31 x 10.81 x 4	55	60	27	32	50	—
VI	4.29 x 8.64 x 4	37	48	27	24	30	—
VII	4.24 x 8.64 x 4	37	48	27	24	30	—
VIII	5.38 x 8.64 x 4	46	60	30	40	50	—
Floor 0 - Foyer	50.90 x 17.29 x 4.8	742	—	—	—	—	700

ROOM	L x W x H	AREA (sqm)	THEATRE	SCHOOL	CABARET	BANQUET	COCKTAIL COFFEE BREAK
NEPTUNO	19.50 x 21.72 x 4	420	430	210	168	208	400
I	5.38 x 8.64 x 4	46	60	30	40	50	—
II	4.24 x 8.64 x 4	37	48	27	24	30	—
III	4.29 x 8.64 x 4	37	48	27	24	30	—
IV	6.31 x 10.81 x 4	55	60	27	32	50	—
V	6.31 x 10.81 x 4	55	60	27	32	50	—
VI	4.29 x 8.64 x 4	37	48	27	24	30	—
VII	4.24 x 8.64 x 4	37	48	27	24	30	—
VIII	5.38 x 8.64 x 4	46	60	30	40	50	—
Floor 0 - Foyer	50.90 x 17.29 x 4.8	742	—	—	—	—	700



## FLOOR 1 FÉNIX

ROOM	L x W x H	AREA (m <sup>2</sup> )	THEATRE	SCHOOL	CABARET	BANQUET	COCKTAIL COFFEE BREAK
FENIX	31.26 x 71.73 x 10	2215	3000	1188	1120	1400	3000
I	8.34 x 28.81 x 10	242	240	132	112	140	—
II	10.85 x 28.81 x 10	307	240	132	112	140	—
III	12.06 x 28.81 x 10	347	272	132	112	140	—
IV	12.06 x 28.81 x 10	347	272	132	112	140	—
V	19.09 x 14.81 x 10	282	272	126	120	150	—
VI	19.09 x 13.90 x 10	266	254	105	96	120	—
I+ II + III	31.26 x 28.81 x 10	896	808	420	336	420	—
I+ II + III + VII	31.26 x 58.04 x 10	1329	1414	648	552	690	—
IV+ V + VI	31.26 x 28.81 x 10	896	808	420	336	420	—
IV+ V + VI + VII	31.26 x 58.04 x 10	1329	1414	648	552	690	—
Floor 1 - Foyer	58.04 x 8.71 x 7.50	583	—	—	—	—	500

## TERRACES & ROOFTOP

ROOM	AREA (sqm)	BANQUET	COCKTAIL COFFEE BREAK
Rooftop	2656	2400	3500
Marina View Terrace - Floor 1	140	—	100
Ocean View Terrace - Floor 1	202	—	180
Waterfront Terrace - Floor 1	412	—	380
Pégaso Garden - Floor 0	383	—	100
Neptuno Garden - Floor 0	383	—	100



## TIVOLI MARINA VILAMOURA

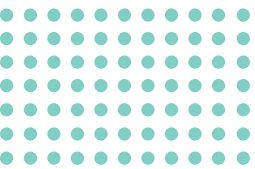
### MEETING ROOMS AND ADDITIONAL VENUES

ROOM	L x W x H	AREA (sqm)	THEATRE	SCHOOL	CABARET	BANQUET	COCKTAIL COFFEE BREAK
Aquarius	16.3 x 14.7 x 3.5	238	160	120	90	150	120
Vega	20.5 x 7 x 3.2	143,5	170	110	—	—	120
Gemini	26 x 15 x 3.7	390	480	280	180	300	400
Gemini I	8.3 x 15 x 3.7	124,5	170	100	50	80	120
Gemini I & II	17.7 x 15 x 3.7	265,5	320	180	90	200	300
Gemini II	9.4 x 15 x 3.7	141	180	100	50	104	150
Gemini III	8.3 x 15 x 3.7	124,5	170	100	50	80	120
Lakeside	—	2130	—	—	—	1050	3000
Ocean Lounge	—	333	—	—	—	180	200
Purobeach Beachfront	—	—	—	—	—	120	600
Purobeach Poolside	—	—	—	—	—	—	280

### OUTSTANDING MEETINGS AND EVENTS

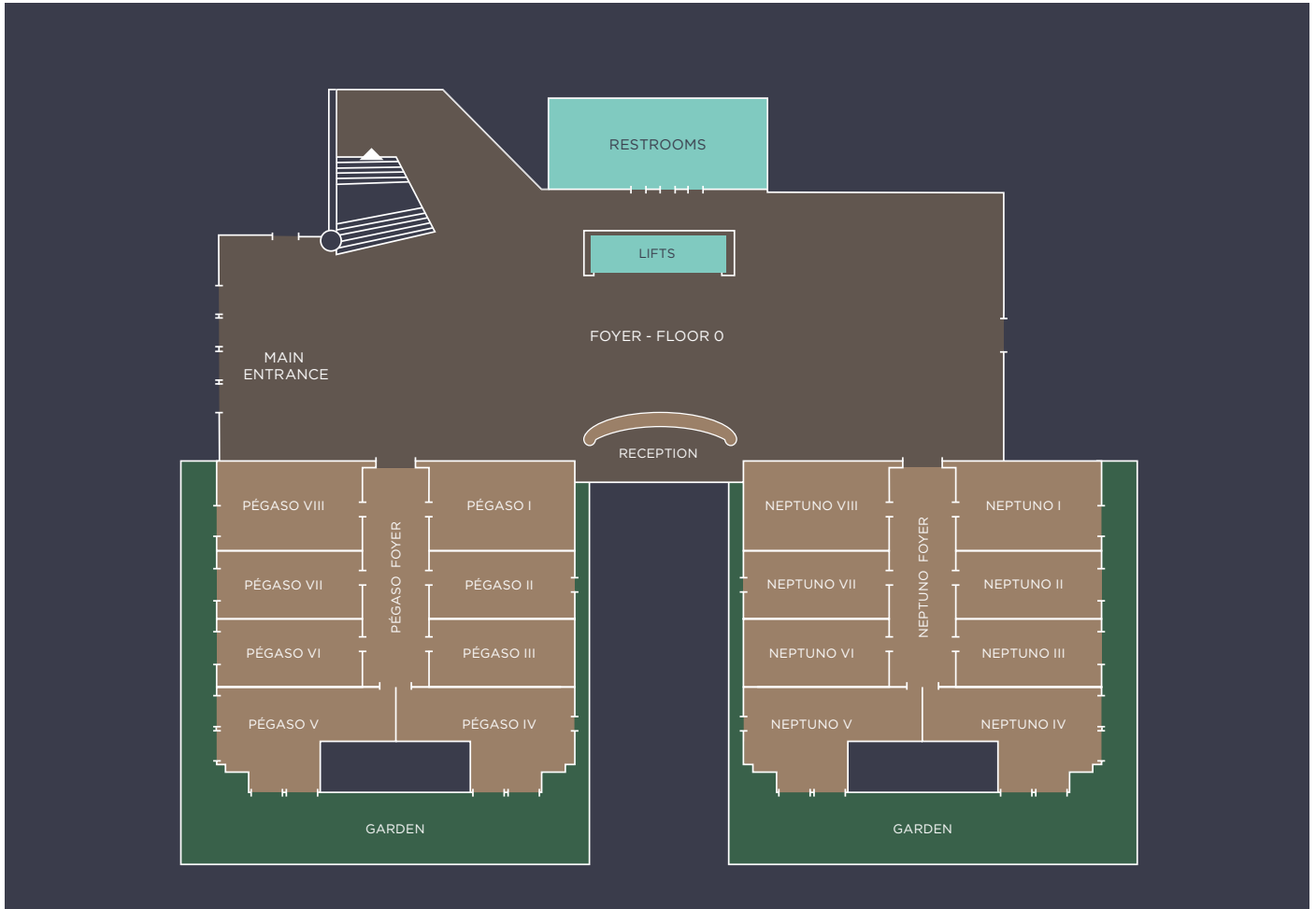
Let our experienced team create an unforgettable programme, featuring coastal activities, first-class catering and more.

Enjoy beautifully designed areas showcasing the Mediterranean climate and breathtaking Algarve scenery. Get down to business against marina and waterfront panoramas. Raise a glass wherever you like: gardens, rooftops, beaches or sophisticated interiors bursting with natural light.

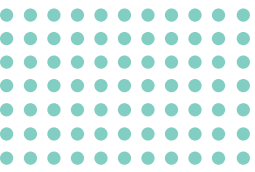


# CENTRO DE CONGRESSOS DO ALGARVE FLOOR PLAN

## FLOOR 0







# CENTRO DE CONGRESSOS DO ALGARVE FLOOR PLAN

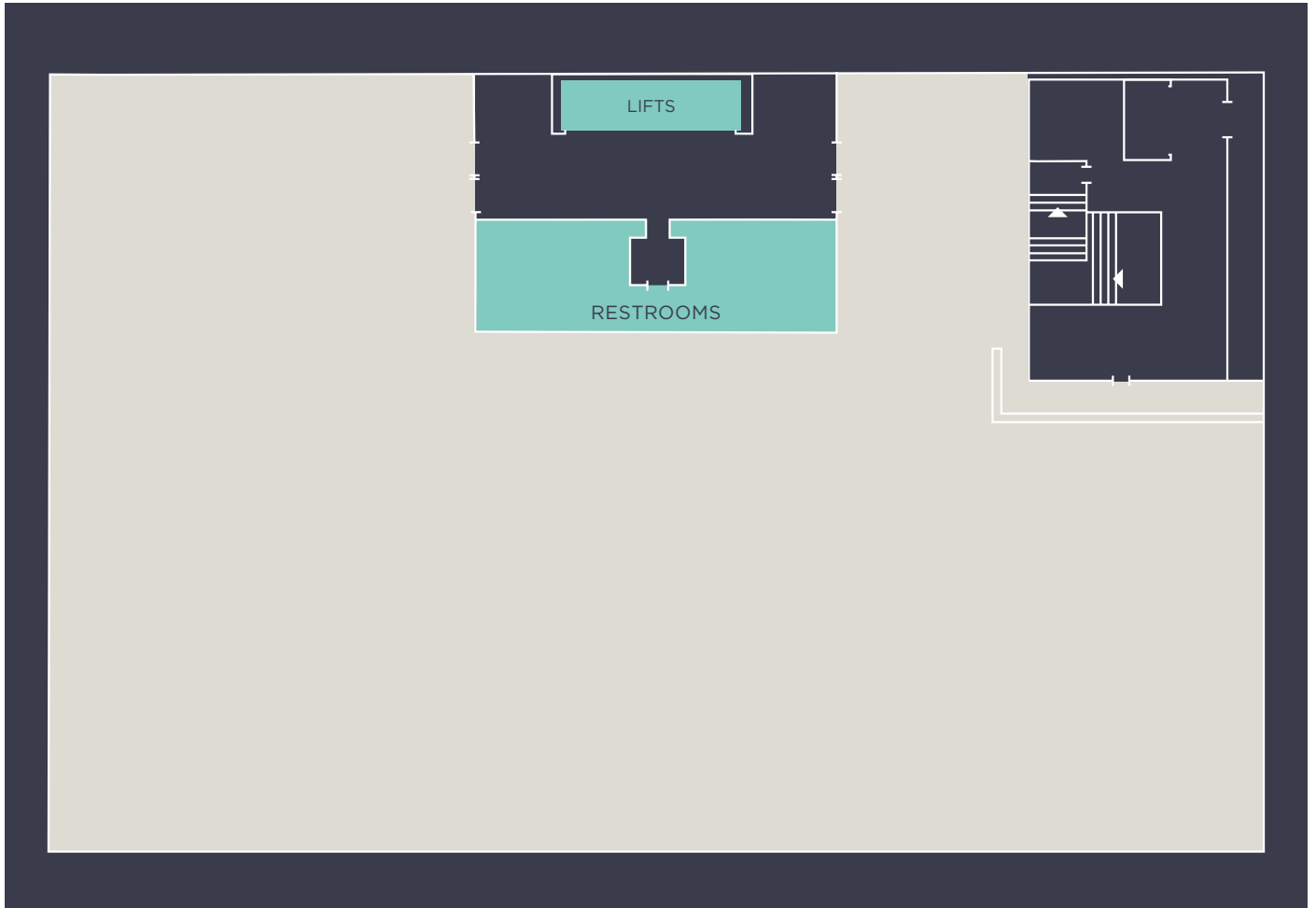
## FLOOR 1





# CENTRO DE CONGRESSOS DO ALGARVE FLOOR PLAN

## ROOFTOP





## CONTACTS AND INFO

**Carina Ferreira**

T: +351 289 303 337

M: +351 933 000 138

E: cferreira@minorhotels.com

Apartado 65 Marina Vilamoura, 8125-901  
Vilamoura, Portugal

**GPS: N 37°04'25.80" W 08°07'12.91"**

[www.centrocongressosalgarve.com](http://www.centrocongressosalgarve.com)

[www.virtualtour.centrocongressosalgarve.com](http://www.virtualtour.centrocongressosalgarve.com)