



TIMELESS ELEGANCE
IN THE HEART
OF LISBON



TIVOLI
AVENIDA LIBERDADE
LISBOA HOTEL

tivolihotels.com



W E L C O M E T O T I V O L I A V E N I D A L I B E R D A D E

Having opened its doors in 1933, the Tivoli Avenida Liberdade is a true symbol of Portuguese hospitality. Located in the heart of Lisbon, on the iconic Avenida da Liberdade, it is just steps away from the historic districts of Baixa, Chiado, and Príncipe Real.

Blending classic charm with modern style, the hotel's rooms, suites, and common areas capture the essence of the 1950s while showcasing sophisticated design.

The hotel features two restaurants: Cervejaria Liberdade, which celebrates traditional flavours through a selection of fresh fish and seafood; and SEEN by Olivier Restaurant and Bar, offering contemporary cuisine with Mediterranean and Japanese influences, signature cocktails, and breathtaking views of the city in a vibrant, cosmopolitan setting.

For moments of tranquillity and well-being, the Anantara Spa serves as a true sanctuary, providing personalised relaxation and beauty treatments inspired by the renowned Thai brand's philosophy and expertise.

The hotel is also a prominent stage for Lisbon's cultural life, regularly hosting art exhibitions and live musical performances, fostering an authentic connection to its local community.

L O C A T I O N

Located in the centre of Lisbon, on the iconic Avenida da Liberdade, 8 km from Lisbon Airport.

GPS: N 38° 43' 16,42", W 9° 8' 49,35".

A C C O M M O D A T I O N

264 Guest rooms, including:

34 Deluxe	12 Junior Suites
1 Deluxe Connecting	21 Junior Suites Signature
14 Deluxe Signature	11 Premium Suites
25 Deluxe City View	11 Premium Suites Signature
7 Deluxe City View Signature	8 Executive Suites
24 Deluxe River View Signature	5 Executive Suites with Terrace
36 Premium Avenue View	7 Executive Suites Signature
34 Premium Avenue View Signature	1 Beatriz Costa Suite
12 Premium Family	1 Presidential Suite

ROOMS

DELUXE

Elegantly designed for comfort and practicality, these rooms offer double or twin beds, a work desk, and a bathroom with walk-in shower or bathtub.

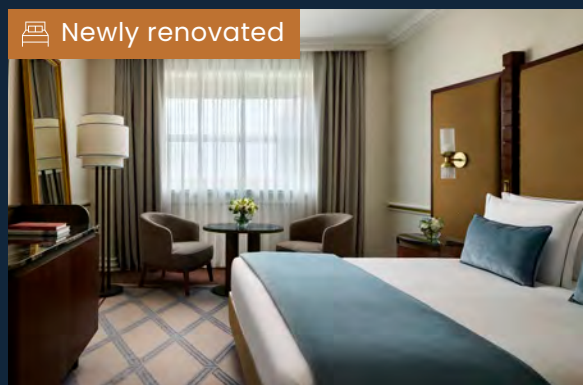
Enjoy all the room amenities and thoughtful treats with a fresh espresso in hand as you prepare to explore Lisbon, starting from a location that places the city's charm within easy reach.



DELUXE SIGNATURE

With a brand-new design—signature style—inspired by the hotel's history, these rooms, facing the tranquil inner patio, offer a double bed, a side table with plush armchairs, and a bathroom with walk-in shower or bathtub.

Relish in comfort and elegance, and after a serene night's rest, get ready to explore Lisbon from the heart of the city.



DELUXE CITY VIEW

These gracefully appointed rooms offer views of Lisbon's lively streets in a relaxed, comfortable setting. As morning breaks, watch the city awaken, inviting you to explore its vibrant charm.

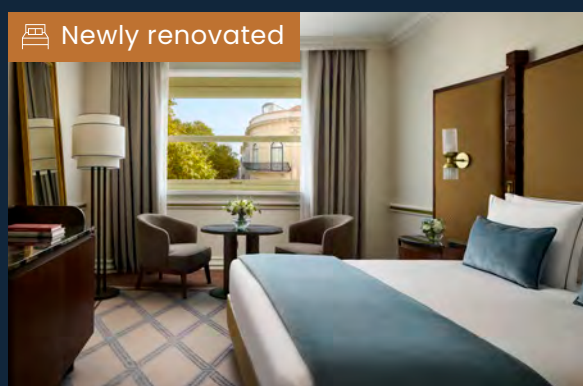
With double or twin beds, a desk for two and a bathroom with walk-in shower or bathtub, they blend coziness with cosmopolitan flair.



DELUXE CITY VIEW SIGNATURE

Showcasing a brand-new design—signature style—inspired by the hotel's heritage, these rooms offer city views in a cozy and elegant setting. Featuring a double bed, a side table with plush armchairs, and a bathroom with walk-in shower or bathtub, they blend grace with cosmopolitan flair.

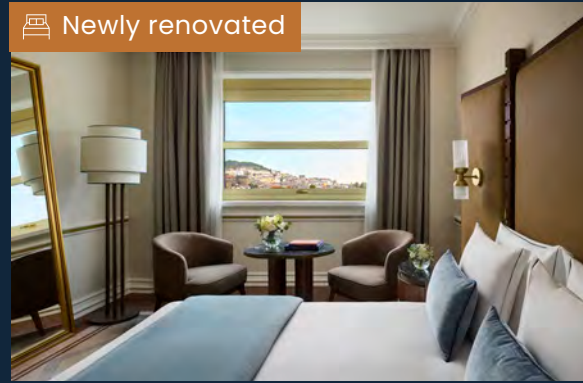
Recharge in style before exploring Lisbon's vibrant rhythm just steps away.



DELUXE RIVER VIEW SIGNATURE

Recently redesigned with heritage-inspired décor, these rooms boast delightful views of Lisbon's historic neighborhoods, including St. Jorge Castle, all the way to the Tagus River. Light-filled, they offer double or twin beds, a side table with plush armchairs, and a bathroom with walk-in shower or bathtub.

Let the charm at your window inspire your journey through the city.



PREMIUM AVENUE VIEW

These well-appointed rooms offer direct views over the iconic Avenida da Liberdade, where Lisbon's elegance and energy unfold just beneath your window.

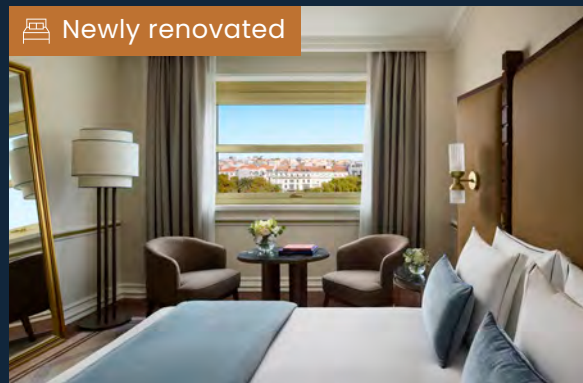
Designed for serene comfort, they feature a choice of double or twin beds, a desk area, and a bathroom with a walk-in shower or bathtub—perfect for soaking in the city's sophistication.



PREMIUM AVENUE VIEW SIGNATURE

With a new design inspired by Tivoli's heritage, these rooms combine signature style with exceptional comfort. Featuring double or twin beds, a side table with plush armchairs, and a bathroom with walk-in shower or bathtub, they connect you to the city's luxury just beyond your window.

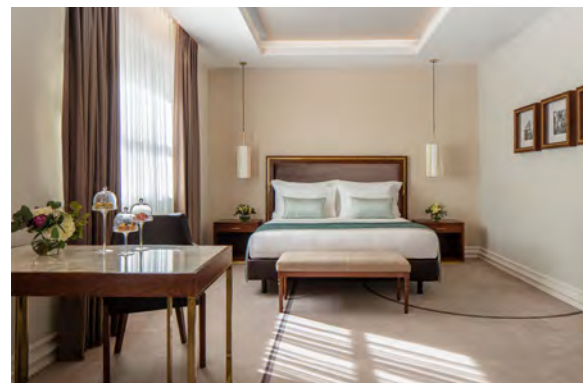
Enjoy direct views over the iconic Avenida da Liberdade, where Lisbon's elegance unfolds below.



PREMIUM FAMILY

With an open-plan layout, these rooms have an adaptable design, making them a good option for families. Featuring a bedroom with double or twin beds, a cozy living area with a sofa bed and a bathroom with both walk-in shower and bathtub, they offer a welcoming space where everyone stays close and connected.

A comfortable base to inspire little explorers on their Lisbon adventure.



SUITES

JUNIOR SUITE

For those looking to work as they travel, or perhaps enjoy a longer stay, our Junior Suites blend elegance and comfort.

Airy and serene, with a living area, tranquil bedroom, and spacious bathroom—perfect for relaxing after a long day.

Placed in Lisbon's vibrant center, they ensure every need is met—whether for work, rest, or discovery.



JUNIOR SUITE SIGNATURE

Unveiling a brand-new aesthetic, blending modern elegance with the hotel's historic charm, our Junior Suites embody space and sophistication.

Wide and serene, they feature a bedroom with queen bed, a stylish living area, and a generous bathroom.

An elevated escape in Lisbon's heart, seamlessly connected to the city's allure.



PREMIUM SUITE

These classic suites offer views of the city or the peaceful patio.

A comfortable bedroom with a double bed and a versatile living room invite rest, work, or dining. The spacious bathroom, with walk-in shower and bathtub, completes this haven of comfort and character.

Relax in timeless luxury before embracing Lisbon's rhythm.



PREMIUM SUITE SIGNATURE

With a brand-new design—signature style—inspired by the hotel's history, these suites offer serene patio or city views.

With a double bed and a versatile living area, it invites relaxation, work, or dining. The spacious bathroom, with walk-in shower and bathtub, completes this haven of comfort and character.



EXECUTIVE SUITE

Ideal for both professional and leisurely pursuits, these spacious and refined suites offer separate living and sleeping spaces with views of Lisbon's iconic avenue.

Portuguese-made luxury amenities and exclusive services elevate the experience.

A walk-in shower and bathtub invite relaxation, while this tranquil retreat in the city's heart ensures a stylish, comfortable stay filled with charm and inspiration.



EXECUTIVE SUITE WITH TERRACE

Bathed in natural light, these expansive suites feature two private balconies with views to the historic neighborhoods - perfect for soaking up the Portuguese sun and connecting with the city below.

With space to lounge, work, dine and dream, guests staying in these suites also enjoy a selection of exclusive services, thoughtfully curated to elevate the experience and ensure a truly memorable stay.



EXECUTIVE SUITE SIGNATURE

Inspired by the hotel's 1950s architecture, these newly designed suites blend timeless elegance, modern comfort and views to the city.

Earthy tones create a warm, inviting atmosphere, while Portuguese ceramics and curated local art connect guests to Lisbon's cultural soul.

Guests staying in these suites also enjoy a selection of exclusive services, thoughtfully curated to elevate the experience and ensure a truly memorable stay.



BEATRIZ COSTA SUITE

Step into this heritage suite honoring one of Portugal's iconic theatre and cinema stars, Beatriz Costa, who lived in the hotel for decades.

This unique suite blends golden-age charm with curated memorabilia and artwork celebrating her legacy, complemented by two balconies with sweeping views over Lisbon.

An experience steeped in history, culture, and character.



PRESIDENTIAL SUITE

A stay in the hotel's most prestigious suite, where elegance meets cultural richness.

Featuring fine art by renowned Portuguese artists and period furniture, it reflects the country's creative heritage.

The spacious layout includes a bedroom, dressing room, marble bathroom with walk-in shower and whirlpool, living and dining areas, kitchenette, and an optional adjoining room.

Two private balconies complement the experience, offering sweeping views over Lisbon.



HOTEL FACILITIES

- WIFI across property
- Valet parking
- Express laundry service
- Welcome amenity for children
- Concierge service
- PressReader - Digital newspapers and magazines
- SEEN by Olivier Restaurant and Bar
- Cervejaria Liberdade Restaurant
- SEEN Sky Bar
- Lobby Bar
- Outdoor pool with bar area
- Anantara Spa with sauna
- The Shape Club - 24 hour gym

ROOM FACILITIES

- LCD television
- Nespresso coffee machine and tea facilities
- In-room safe
- Robes and slippers
- Mini bar
- Iron and ironing board
- Turndown service
- Room service available 24 hours

EXCLUSIVE BENEFITS FOR SUITES*

AMENITIES

- Luxury bath amenities
- Complimentary mini-bar (non-alcoholic beverages)
- In-suite fitness equipment**

SERVICES

- One-way transfer from/to the station/airport
- In-suite check-in
- Ironing service (2 garments per stay)
- Port wine tasting experience
- Turndown tea service
- Anantara Spa treatment**

* Valid for reservations in the Executive Suite, Executive Suite with terrace, Executive Suite Signature, Beatriz Costa Suite and Presidential Suite.

**Available exclusively in the Beatriz Costa Suite and the Presidential Suite.

SUMMARY OF BEDROOM TYPES

ROOM TYPE	BED TYPE	AREA (sqm/sqft)	FLOOR	MAXIMUM ROOM CAPACITY
Deluxe	Double or twin	23/248	1 st to 4 th	2 adults
Deluxe Signature	Double	23/495	5 th to 8 th	2 adults
Deluxe City View	Double or twin	23/248	1 st to 4 th	2 adults + 1 child
Deluxe City View Signature	Double	23/248	5 th to 8 th	2 adults + 1 child
Deluxe River View Signature	Double or twin	23/248	5 th to 8 th	2 adults + 1 child
Premium Avenue View	Double or twin	23/248	1 st to 4 th	2 adults
Premium Avenue View Signature	Double or twin	23/248	5 th to 8 th	2 adults
Premium Family	Double or twin	45/248	6 th to 7 th	2 adults + 1 child

SUITE TYPE	BED TYPE	AREA (sqm/sqft)	FLOOR	MAXIMUM ROOM CAPACITY
Junior Suite	Double	45/484	1 st to 8 th	2 adults + 1 child
Junior Suite Signature	Queen	45/484	5 th to 8 th	2 adults + 1 child
Premium Suite	Double	45/484	1 st to 4 th	2 adults + 1 child
Premium Suite Signature	Double	45/484	5 th to 8 th	2 adults + 1 child
Executive Suite	King size	64/689	1 st to 8 th	2 adults + 1 child
Executive Suite with Terrace	King size	82/882	1 st , 2 nd , 3 rd , 5 th and 6 th	2 adults + 1 child
Executive Suite Signature	King size	65/699	1 st to 7 th	2 adults + 1 child
Beatriz Costa Suite	King size	104/1120	4 th	2 adults + 2 children
Presidential Suite	King size	210/2260	7 th	2 adults + 2 children



NEARBY ATTRACTIONS

- International and Portuguese designer fashion stores along Avenida da Liberdade
- Historical areas of Baixa, Chiado and Príncipe Real, with attractions such as the Arco de Santa Justa and Lisbon Cathedral (20-minute walk)
- Lisbon and Estufa Fria Botanical Gardens (20-minute walk)
- Gloria and Santa Justa Lifts (15-minute walk)
- São Jorge Castle (15-minute drive)
- Calouste Gulbenkian Museum (15-minute drive or on the metro)
- National Tile Museum (20-minute drive)



RESTAURANTS AND BARS

SEEN BY OLIVIER

Perched on the 9th floor with an Art Deco-inspired design, panoramic views, and a vibrant atmosphere, SEEN by Olivier has become a true landmark in the city. Sip on a signature cocktail at the iconic 360° Bar near the entrance or indulge in dishes inspired by contemporary cuisine with Mediterranean and Japanese influences — perfect for sharing with friends or loved ones. The resident DJ sets the tone, creating the ideal cosmopolitan vibe for this hotspot, which lives up to its motto: “Sin and be seen.”

Capacity: 200 seats

Opening hours:

Sunday to Thursday from 6:30 PM to 01:00 AM

Fridays and Saturdays from 6:30 PM to 02:00 AM



CERVEJARIA LIBERDADE

Overlooking the broad pathways of Avenida da Liberdade, Cervejaria Liberdade serves up Portuguese flavours in an elegant, refined setting. Its high ceilings allow natural light to flood in, creating a welcoming atmosphere that lingers throughout the day. The menu pays tribute to traditional recipes, serving the city's classic dishes. True to the culture of Lisbon's iconic “cervejarias”, Cervejaria Liberdade prides itself on serving the freshest fish and seafood. The menu also features the regular guest's favourites, such as Steak Tartare and Crêpes Suzette, both expertly prepared right in front of the guests.

Capacity: 100 seats

Opening hours:

Buffet breakfast from 07:00 AM to 10:30 AM

Restaurant from 12:30 PM to 11:30 PM



SEEN SKY BAR

Providing panoramic views over Lisbon, SEEN Sky Bar combines elegance and style to create the perfect setting for sharing delicious lunches and all-day nibbles—ideal for a table full of friends. The bar serves the perfect mix of fresh cocktails, paired beautifully with sunny afternoons, while the DJ sets the tone with immersive beats that flow late into the night. An elevated experience in every sense, brought to you by Olivier da Costa.

Capacity: 350 people, including 113 seats.

Lunch served daily from 12:30 PM to 3:30 PM.
Bar open Sunday to Thursday from 3:30 PM to 1:00 AM, and Friday and Saturday from 3:30 PM to 2:00 AM.



LOBBY BAR

Located in a spacious, light-filled setting where everything comes to life, the Lobby Bar is the perfect meeting point—whether for a drink, a light meal, a business meeting, or simply to unwind. In addition to an extensive drinks menu, it offers a selection of tapas, sandwiches, fresh salads, and desserts that can be enjoyed throughout the day. The lobby bar also features daily live music performances.

Opening hours: 10:00 AM to 01:00 AM



POOL BAR

Nestled in the hotel's semi-tropical garden, the Pool Bar is the perfect spot to enjoy a light meal on warm days. The menu features a selection of snacks, sandwiches, salads, and ice creams, along with a variety of cocktails, wines, and freshly pressed juices.

Opening hours: 10:00 AM to 7:00 PM (May–September)

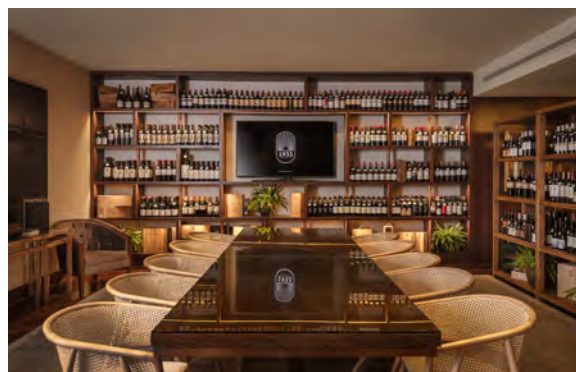


LEISURE & WELLNESS

1933 WINE & SPIRITS COLLECTION BY CELLAR 47

Curating an exclusive selection of premium Portuguese and international labels, the 1933 Wine & Spirits Collection is a delight for both collectors and connoisseurs. It also offers bespoke experiences, such as tastings and masterclasses by a team of expert sommeliers who are dedicated to providing personalized recommendations

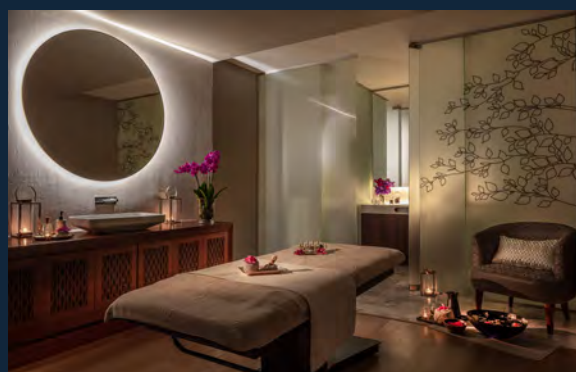
Opening hours: 12:30 PM to 11:00 PM



ANANTARA SPA LISBON

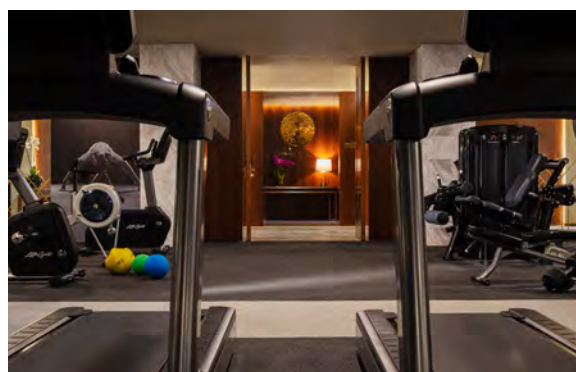
With its four treatment rooms, the Anantara Spa Lisbon—part of the renowned Thai brand—is a haven of tranquillity in the vibrant heart of the city. The spa's extensive menu includes massages and relaxation rituals, as well as facial treatments in partnership with the prestigious brands Biologique Recherche and Natura Bissé. Guests can also indulge in a sauna session, either before or after their treatment.

Opening hours: 09:00 AM to 08:30 PM



THE SHAPE CLUB

A 24-hour gym featuring state-of-the-art equipment is ready to welcome anyone wanting to keep on top of their exercise routine and healthy lifestyle, whether away on holiday or for work. A Personal Trainer service is also available by appointment only.



SWIMMING POOL

Nestled within the hotel's verdant garden and open throughout spring and summer, the outdoor swimming pool has welcomed guests with a serene escape from the city since the 1980s. Shaded by century-old trees and lush flora, swimmers take refreshing dips serenaded by the sounds of birdsong.





TIVOLI WEDDINGS

Plan your wedding in one of the most romantic cities in the world. The unique architectural charm of Tivoli Avenida Liberdade makes it the perfect setting to tie the knot. Our team of

professionals is at your service to plan the big day, from the main ceremony in the Conference and Events Centre, with its palatial design and extravagant frescoes, to sunset celebrations at our rooftop SEEN Sky Bar.



MEETINGS AND EVENTS

Our Conference Centre is housed within the charismatic Palacete Condes de Sucena, a historic building dating back to 1928. The remarkable venue with its original features thoughtfully preserved and seamlessly adapted, is ideal for a wide range of events—from meetings and private parties to the most exacting celebrations. Host your event in a truly unique setting, supported by an experienced team dedicated to ensuring every detail is flawlessly executed.

INFRASTRUCTURE AND SERVICES AVAILABLE

- Rooms equipped with state-of-the-art technology
- 12 Meeting rooms and 3 Foyers
- WiFi in public areas and meeting rooms
- Analogue and ISDN lines in rooms
- Direct access to buses

PREMIUM EVENTS

- Private check-in
- Express check-out service
- A 24-hour hotline is available to contact the Events Assistant
- Prior meeting with hotel management
- Post-event meeting
- Daily briefings with the group coordinator

Premium services are subject to availability and pricing.

MEETING ROOMS TIVOLI AVENIDA LIBERDADE

ROOM	m ² /ft ²	OVAL TABLE	HOLLOW SQUARE	U TABLE	SINGLE TABLE	BANQUET	BANQUET BUFFET	COCKTAIL	CABARET	CLASSROOM	THEATRE
MEZZANINE FLOOR											
Pardal Monteiro	101/1087	24	28	24	20	60	50	90	40	45	80
Parque Mayer	79/850	32	33	29	26	50	40	60	32	36	50
Sintra	109/1173	30	38	34	26	64	-	100	42	54	80
Boardroom	42/452	-	-	-	14	-	-	-	-	-	-
LOBBY											
Tivoli	187/2012	60	70	60	50	160	90	250	102	110	200

MEETING ROOMS CONFERENCES AND EVENTS CENTRE

ROOM	m ² /ft ²	OVAL TABLE	HOLLOW SQUARE	U TABLE	SINGLE TABLE	BANQUET	BANQUET BUFFET	COCKTAIL	CABARET	CLASSROOM	THEATRE
FLOOR 0											
Barata Salgueiro	105/1130	-	-	-	-	-	50	120	-	-	80
Patio	-	-	-	-	-	300	-	400	-	-	-
Swimming Pool	-	-	-	-	-	200	180	300	-	-	-
FLOOR 1											
Condes de Sucena I + II + III	290/3122	80	88	80	76	220	170	300	151	210	322
Condes de Sucena I ou III	98/1055	26	36	27	22	65	55	70	40	60	98
Condes de Sucena II	68/732	24	30	24	20	50	44	50	32	36	72
Foyer Condes de Sucena	-	-	-	-	-	-	-	25	-	-	-
Castello Lopes	211/2271	44	72	54	40	180	160	300	112	144	260
Avenida	55/592	20	27	21	20	30	20	40	21	24	30
Foyer Avenida	-	-	-	-	-	-	-	25	-	-	-
FLOOR 2											
Norte Júnior	60/646	32	28	25	28	40	-	70	32	36	48
Foyer Norte Júnior	-	-	-	-	-	-	-	25	-	-	-

*The capacity shown does not include space for audiovisual equipment.

Explore our meeting rooms in detail using an **INTERACTIVE 3D PLANNING** tool



H O T E L P O L I C I E S

EARLY CHECK-IN

Guests may check-in from 3 PM onwards.
Early check-in may be available, subject to a surcharge.

LATE CHECK-OUT

Guests are required to check out by midday.
Late check-out may be available, subject to a surcharge.

CREDIT CARDS

We accept the following credit and debit cards: American Express, Visa, and MasterCard.

PETS POLICY

We welcome dogs and cats up to 25kg, subject to an additional fee.

C O N T A C T

tivolihotels.com

IG. [@tivoliavenidaliberdade](https://www.instagram.com/tivoliavenidaliberdade)

E. avenidaliberdade@tivoli-hotels.com

T. +351 213 198 900

Av. da Liberdade, 185 - 1269-050 Lisboa, Portugal

TIVOLI
AVENIDA LIBERDADE
LISBOA HOTEL


THE LEADING HOTELS
OF THE WORLD®

DISCOVERY 