

**TIVOLI**  
MOFARREJ  
SÃO PAULO HOTEL



## The most exclusive starting-point for setting out to explore São Paulo

Unique sophistication in a privileged setting: enjoy  
unforgettable experiences at Tivoli Mofarrej São Paulo

Tivoli Mofarrej São Paulo  
Alameda Santos, 1437  
T: +55 11 3146 5900  
E: [reservations.tspm@tivolihotels.com](mailto:reservations.tspm@tivolihotels.com)  
[www.tivolihotels.com](http://www.tivolihotels.com)  
@tivolimofarrej



DISCOVERY  THE LEADING HOTELS  
OF THE WORLD\*



# Tivoli Mofarrej São Paulo

Tivoli Mofarrej São Paulo lies in the heart of Jardins, one of São Paulo's most upscale central neighborhoods. Thanks to architect Patricia Anastassiadis' design, the hotel blends sophistication and comfort.



Whether you are a business traveler or a tourist, chill out with the relaxing massages offered by Anantara Spa, a renowned Thai network, or delight your palate at either of our two international restaurants.

Life takes on unparalleled sophistication and refinement at Tivoli Mofarrej São Paulo, designed for all those keen to enjoy a unique experience.



## Accommodation

### 218 rooms, including:

**1** Presidential Suite (1 Executive Suite Garden View + 2 Deluxe Suite Garden View)

**1** Park Suite (1 Deluxe Suite Garden View + 1 Deluxe Plus Twin)

**4** Executive Suite Garden View

**28** Deluxe Suite Garden View

**68** Deluxe Plus

**34** Deluxe Plus Twin

**79** Deluxe Room (eight of which are adapted to meet the needs of reduced mobility guests)

**Deluxe Family Room:** package including

1 Deluxe Room +

1 Deluxe Plus Twin

## Location

The hotel's location is unrivaled: on Alameda Santos in the heart of São Paulo's upscale Jardins neighborhood. The hotel is within walking distance of the elegant boutiques of Rua Oscar Freire and less than one block away from Brazil's major financial center: Avenida Paulista. It lies some 28 km from Guarulhos International Airport and 9 km from Congonhas Airports. Within walking distance of public transportation systems.

## Presidential Suite

Located on the 22nd floor of the hotel, with a panoramic view for the best of São Paulo and windows that go from the floor to the ceiling, the new Presidential Suite presents a simple, innovative and welcoming concept, without losing tradition and sophistication. With extraordinary 8073ft<sup>2</sup>, the largest presidential suite in Latin America reveals privileged spaces, kitchen, office, dining room, living room, three bedrooms and two bathrooms.

After its renovation, the main bedroom has a large, unique, integrated and very bright space, overlooking the Trianon Park. In addition, it has a bathroom with a spacious jacuzzi, double rain shower and sauna.

With an experience that offer, in addition to the excellence of the space, a premium treatment, the guests are entitled to massages at Anantara Spa and can count on a concierge butler service 24 hours a day.



## Park Suite

Providing an exclusive view over Alexandre Gusmão Square and Trianon Park, our Park Suite has an elegant, sophisticated and contemporary flavor. Planned at 2150ft<sup>2</sup>, this Suite subdivides into three separate spaces: a Deluxe Suite Garden View, a Deluxe Plus Twin and a living area including a living-room, TV room and home theater, an office and library, a dining-room, a wine cellar, and a myriad other features making this suite a perfect blend of luxury, comfort and functionality. The suite, with its private kitchen and supporting room, also has a unique butler's service, special amenities, WiFi, minibar and other exclusive services that all contribute to the experience.



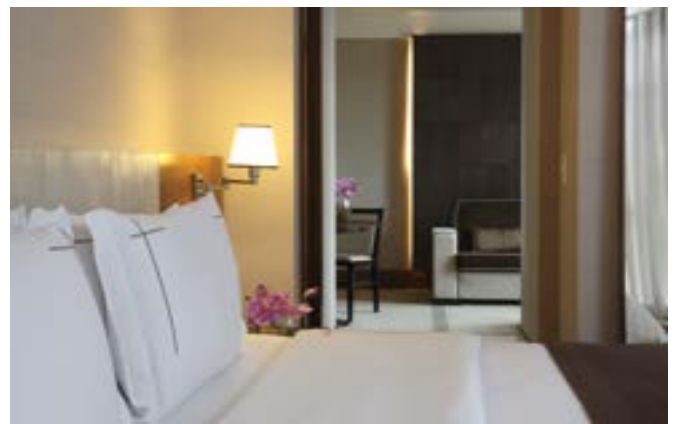
## Executive Suite Garden View

At 750ft<sup>2</sup>, the exclusively appointed Executive Suite Garden View, has a bedroom boasting a King-Size bed and closet, living-room and sofa and armchair, and a meeting/dining space seating 6 people. The generously-proportioned bathroom is equipped with a Victorian tub and a separate shower box. The Suite has a stunning view over Trianon Park and Avenida 9 de Julho.



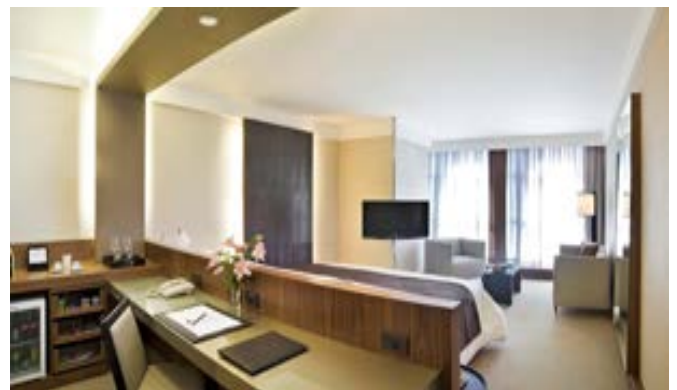
## Deluxe Suite Garden View

Our 430ft<sup>2</sup> Deluxe Suite Garden View comprises two common areas, and includes a living room and bedroom. The space enjoys a stunning view over the Trianon Park, and is furnished with a sofa, armchairs and closet. The generously-proportioned bathroom is equipped with a bathtub outside the shower box.



## Deluxe Plus

Deluxe Plus, at 410ft<sup>2</sup>, offers either a King Size or Twin bed and a comfortable working area. The large living room is furnished with an armchair, sofa and coffee table. When available, the bathroom has a separate shower box.



## Deluxe Room

At 300ft<sup>2</sup> the Deluxe Room, includes a shared relaxation and living area. It is furnished with a Queen or King Sized bed, armchair and table, and comes with a coffee maker.



## Summary of rooms and suites

Type of room	N°	Area	Type of bed
Presidential Suite	1	8070ft2	King Sized Bed
Park Suite	1	2150ft2	King Sized Bed
Executive Suite Garden View	4	840ft2	King Sized Bed
Deluxe Suite Garden View	28	450ft2	King Sized Bed
Deluxe Plus	102	410ft2	King Size bed or 2 Twin beds
Deluxe Room	79	300ft2	Super Queen or King Size bed

## Hotel services

24/7 Room Service  
Valet parking facility  
Laundry  
Private heliport  
Guest relations

Daily starching service for executives  
T/Shoe Shine  
Upon request, baggage may be organized at the commencement and end of your stay  
Private Concierge (7am to 11pm)

Daily newspapers  
Available by request  
Kit for children  
Kit for pets

## Leisure services

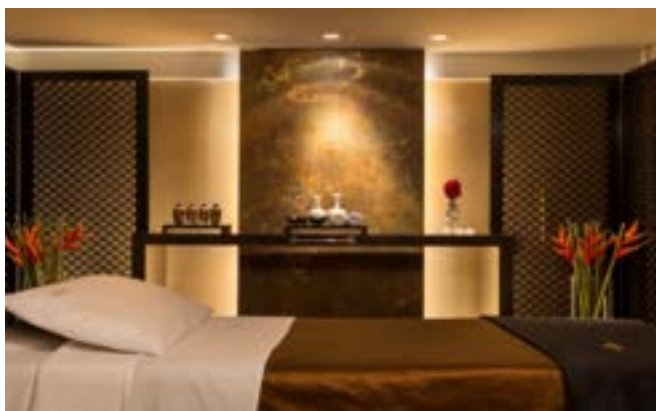
Anantara Spa  
Fitness center  
Outside pool

SEEN Restaurant & Bar  
Must Bar

## Anantara Spa: a relaxing experience

Anantara Spa offers a wellness day blending health and beauty. Our treatments provide a vast range of holistic benefits through a fusion of Thai and Brazilian traditions. Get away from the outside world for a spell and retreat to this sanctuary for the senses. Here at Anantara Spa the best experiences simply flow over you, they are not imposed. Opening hours: Monday to Friday from 7am to 10pm; Saturday from 9am to 10pm; Sunday and holidays from 8am to 8pm.

Anantara Spa opens Monday to Friday from 07am to 210pm, Saturdays from 9am to 10pm and Sundays and holidays from 8am to 8pm.



## Restaurants & bars

### SEEN Restaurant & Bar

SEEN, with its 360° central bar and view of São Paulo's spectacular skyline, enlivens the paulistano nights.

The restaurant has the signature of chefpreneur Olivier da Costa, a son equally of France and of Portugal, who has a twenty-year career in Europe. The varied cuisine is under the command of Chef Gisely Rocha and the drinks are prepared by the bartender Heitor Marin.

Another attraction is the sushi bar led by chef Fernando Sant'anna, accompanied by an exclusive menu of sakes.

SEEN opens Monday to Thursday from 7pm to 1am, and Fridays and Saturdays from 7pm to 02am.



### Must bar

What defines Must Bar is its emphasis on different menus for daytime and nighttime, and its forte is the craft drinks. The bar whole concept is based on creating a strong personality with an enhanced capacity for flavor. Music is the highlight of an evening, with live jazz performances on Wednesdays to Saturdays from 8pm, with special guests every Thursday.

Must Bar is open every day from 8am to 1am.



# Conferences and meetings at Tivoli Mofarrej São Paulo

With 13 rooms and a total area of 31,600ft<sup>2</sup>, our event space boasts state-of-the-art audiovisual and lighting equipment. Covering areas ranging from 300 ft<sup>2</sup> to 6700ft<sup>2</sup>, its maximum capacity is 1,600 people.



## Summary of event rooms

Rooms	Dimensions	Auditorium	Horseshoe format	Classroom	Half-moon	Cocktail	Buffet	Plated
Jardins AB	615 m2	600	-	340	245	650	360	420
Jardins A	29.20 x 14.50 - 3.36 423 m2	450	92	240	154	450	270	340
Jardins B	16.00 x 12.00 - 3.36 192 m2	150	48	112	84	200	120	150
Foyer Jardins	23.50 x 22.25 - 3.36 563 m2	200	-	-	-	350	250	300
Itaim	14.00 x 12.40 - 2.40 253 m2	220	44	140	84	250	150	170
Bela Vista	17.80 x 14.20 - 3.60 253 m2	220	56	152	126	250	200	220
Liberdade	17.20 x 14.00 - 2.60 277 m2	250	44	176	98	300	120	150
Ipiranga	10.30 x 11.10 - 2.06 110 m2	80	32	64	42	60	50	60
Pinheiros AB	12.70 x 06.40 - 2.23 80 m2	40	28	40	28	40	40	40
Pinheiros A	6.35 x 6.40 - 2.23 40 m2	20	12	16	7	20	10	10
Pinheiros B	6.35 x 6.40 - 2.23 40 m2	20	12	16	7	30	10	10
Paraíso	4.55 x 6.40 - 2.23 28.6 m2	Table for 10 people						
Paulista	50 m2	20	15	16	15	30	20	20

## Support infrastructure

13 fully-equipped support rooms  
Reception for groups  
Naturally-lit conference area and Foyer  
with indoor garden and cascade

## Services available

There is Internet WiFi in the  
common areas, meeting  
rooms and bedrooms  
Free access to the Business  
Center

## Hotel policies

### Time of arrival

Check-in begins at 3pm.

### Leaving time

You are requested to vacate your room by midday.

### Credit cards

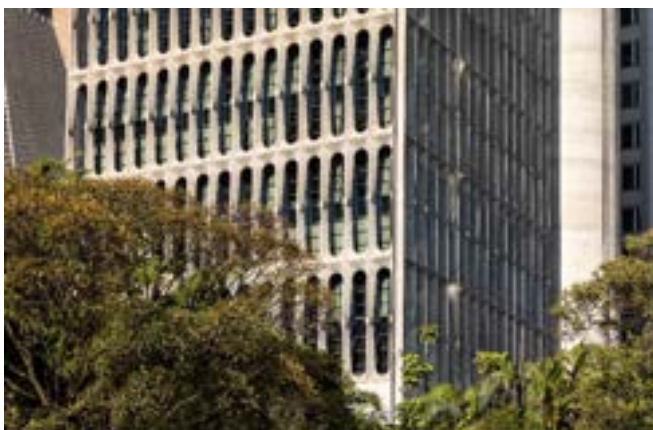
Tivoli Mofarrej São Paulo accepts the following credit cards: American Express, Visa, Mastercard, Dinners and Elo.

### Guaranteeing and confirming your booking

We need a credit card as a guarantee, or prior deposit of the total amount owed for the stay.

### Cancellations policy

In the event of cancellations less than 48 hours before check-in and for no shows, a one-night penalty may be docked from the credit card provided.



Tivoli Mofarrej São Paulo

Alameda Santos, 1437

T: +55 11 3146 5900

E: [reservations.tspm@tivolihotels.com](mailto:reservations.tspm@tivolihotels.com)

[www.tivolihotels.com](http://www.tivolihotels.com)

[@tivolimofarrej](https://www.instagram.com/tivolimofarrej)

DISCOVERY





At Tivoli Mofarrej São Paulo we have implemented the following measures so that you can have a comfortable and safe stay.



Healthy & Safety procedures developed by Protek POSI-Check from Intertek Cristal.



Personal safety equipment & protocols.



Advanced digital services.



Water purification & air quality protocols.



Updated cleaning & sanitizing protocols.



City Connection advisory service.



Food & beverage services tailored to the current situation.



Health & safety protocols for employees.



Social distancing rules.



A hotel team responsible for implementing the health & safety protocols.